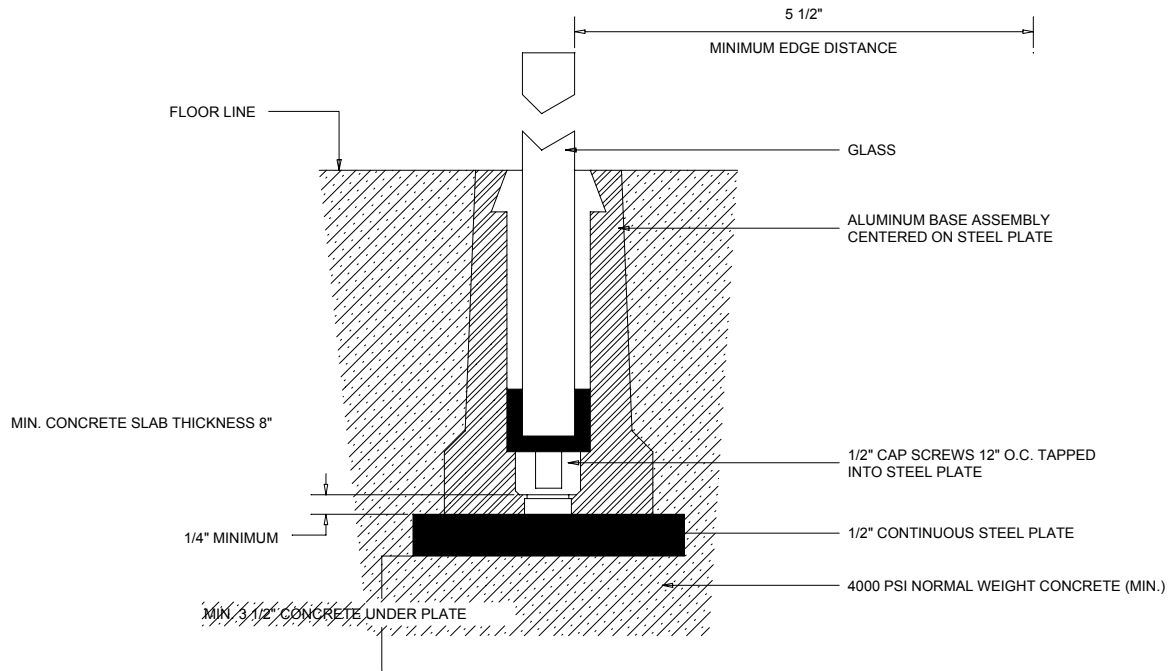
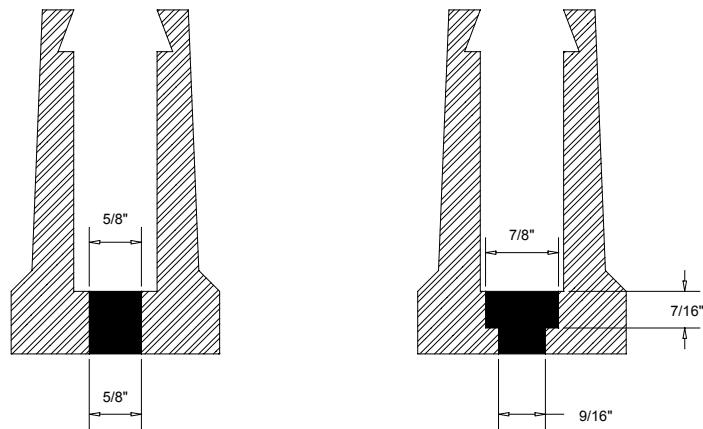


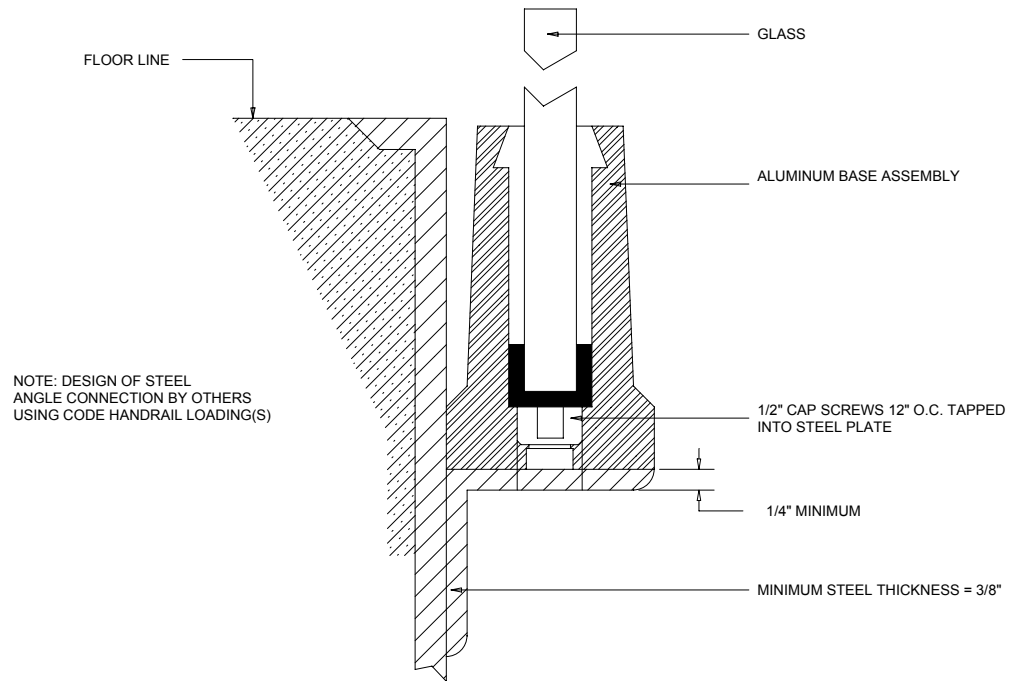
# STRUCTURAL GLASS MOUNTS



# STRUCTURAL GLASS MOUNTS

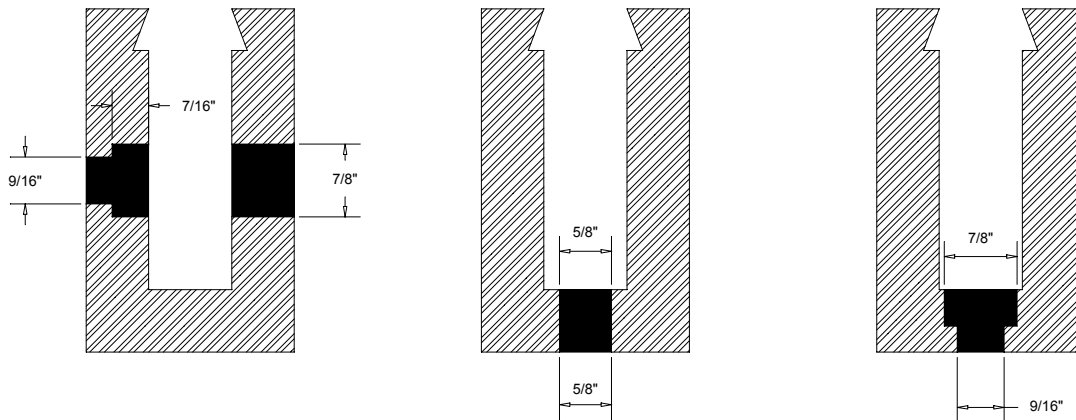


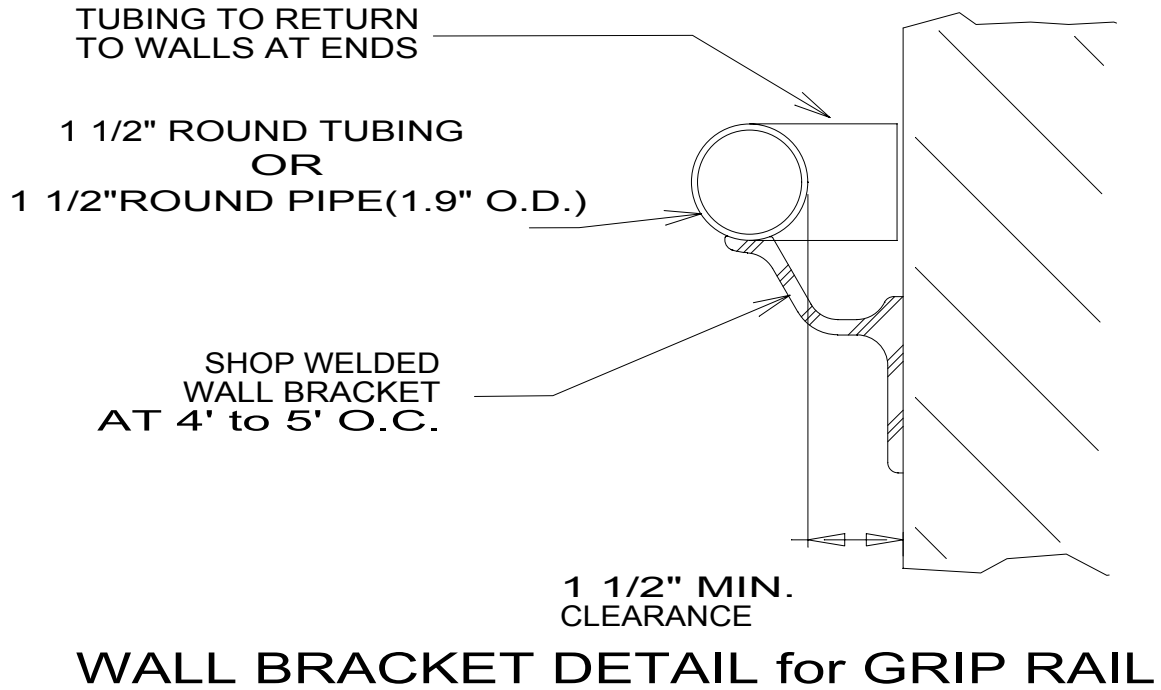
# STRUCTURAL GLASS MOUNTS



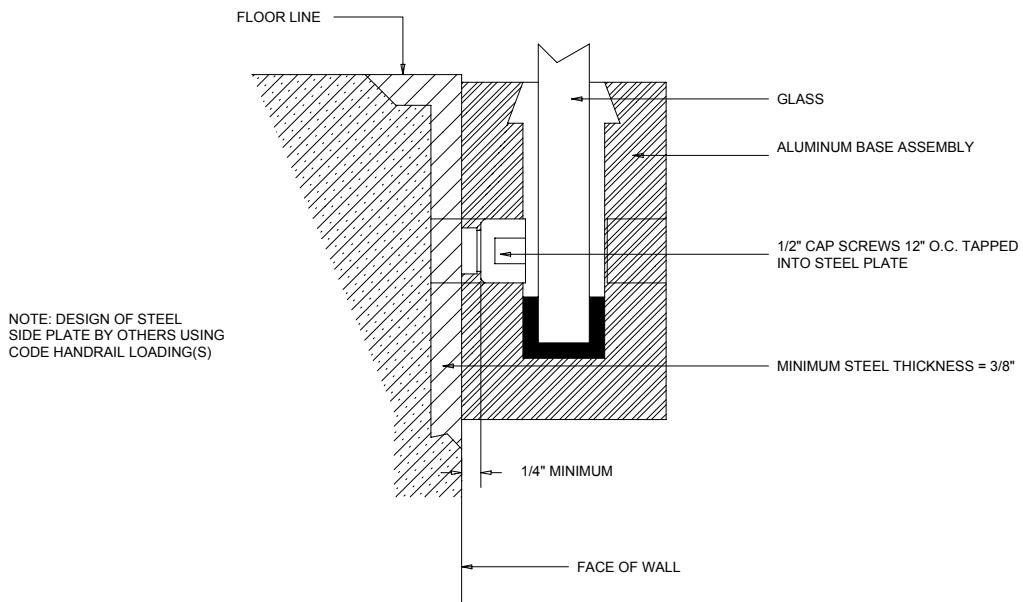
## STRUCTURAL GLASS BASE

# STRUCTURAL GLASS MOUNTS





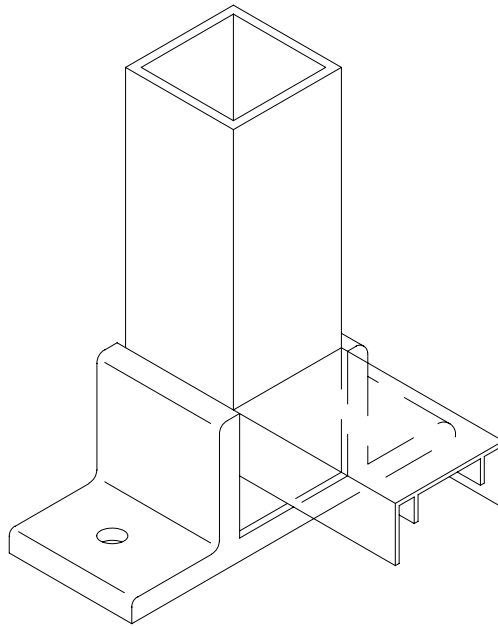
## STRUCTURAL GLASS MOUNTS



## STRUCTURAL GLASS BASE 2

EXTRUDED  
STRUCTURAL GRADE  
ALUMINUM BASE

2 - 1/2" BOLTS



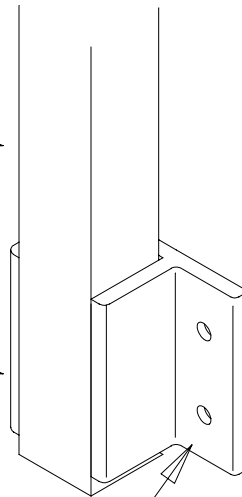
RAILING POST

TYPICAL WELDED BASE SHOE

2" SQ. POST

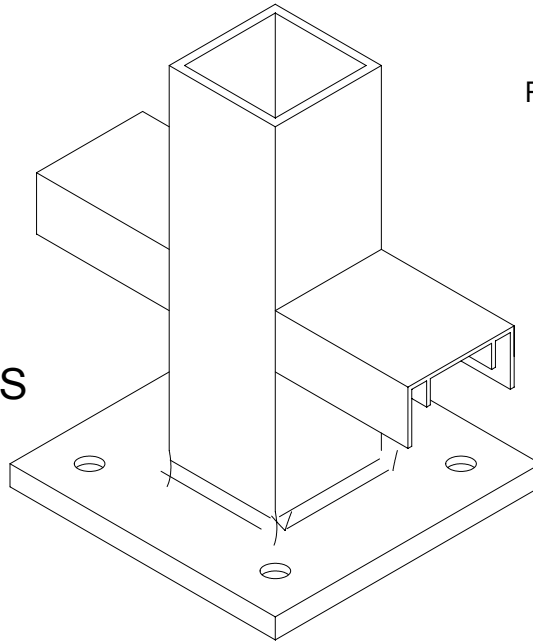
EXTRUDED  
STRUCTURAL GRADE  
ALUMINUM SHOE

4 - 3/8" BOLTS



TYPICAL FLANGE SHOE

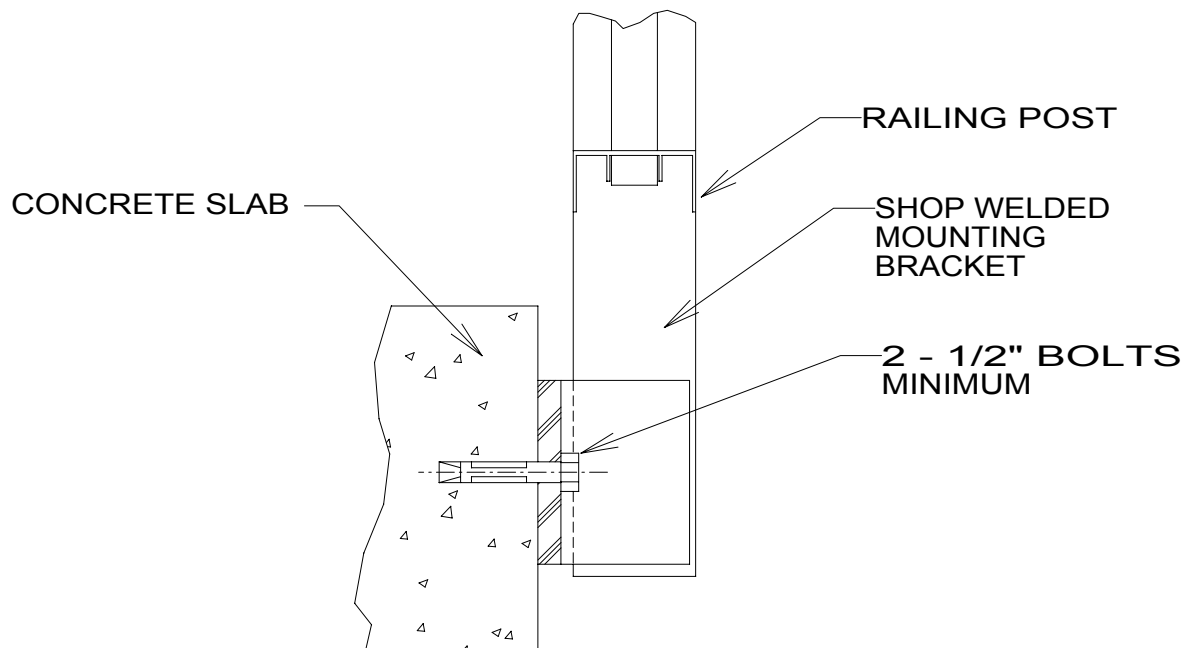
1/4" BASE PLATE  
WITH 6 S.S. TAPCONS



RAILING POST

WELDED BASE PLATE DETAIL

## SIDE MOUNTING of RAILING to SLAB



RAILING POST

SHOP WELDED  
MOUNTING  
BRACKET

2 - 1/2" BOLTS  
MINIMUM

CONCRETE SLAB

# TYPICAL GLASS BASE to STEEL

